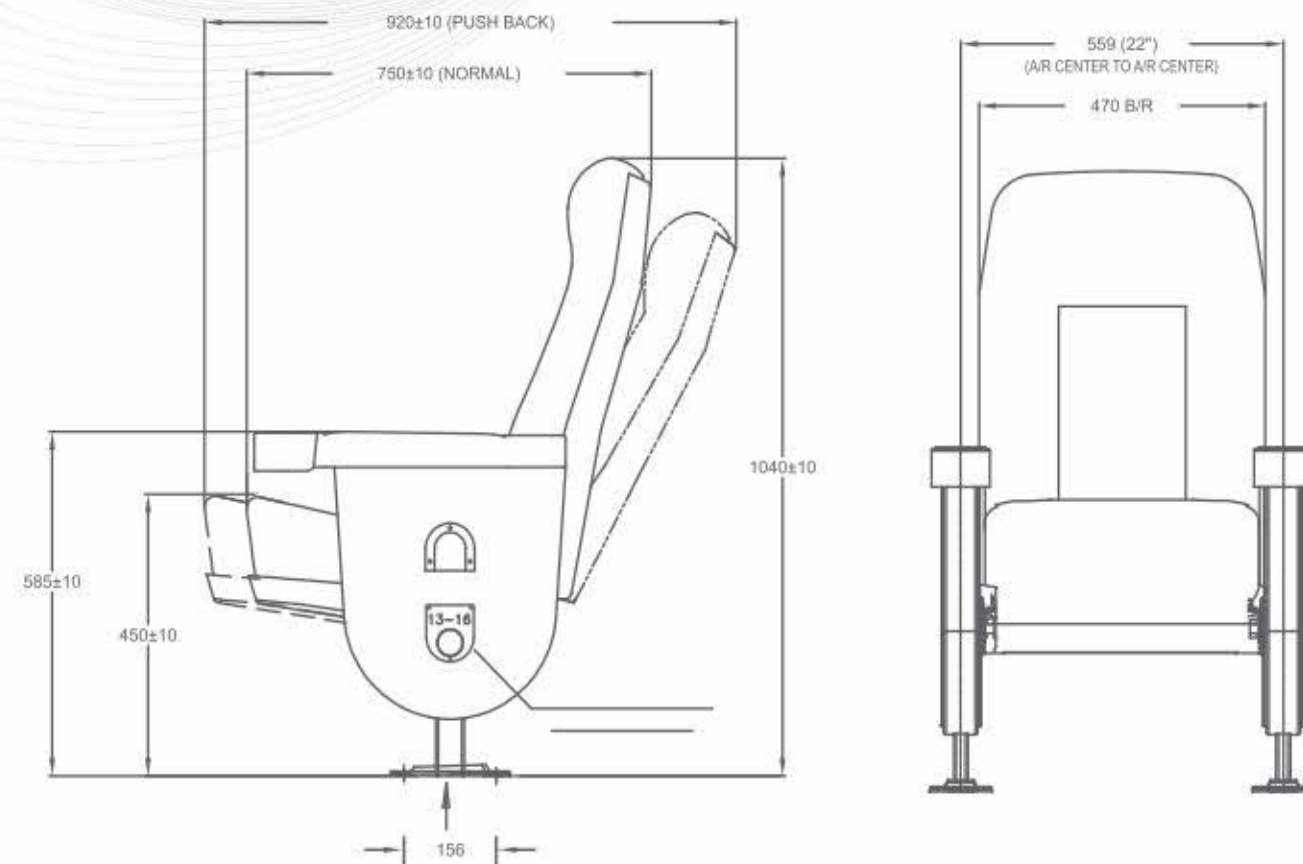


Leisure

- Push back Reclined chair.
- Auto tip-up cushion.
- Seat size available from CTC 21" to 24"
- PPCP Molded housing for Cushion & Backrest.
- Cushion Housing with Acoustical perforation
- PPCP Arm rest with cup holder with integrated skinned PU or with fabric upholstered



Designed For
Luxury And Comfort



Mandatory Requirement: Flooring to be of 3" concrete with 1" of IPS

GENERAL FEATURES OF CHAIR

- Slider mechanism.
- All Exposed metal parts are powder coated.
- Molded PU Foam with Flame Resistant having Density of 50 +- 5
- Chair Structure is made of ERW pipe & sheet metal component.
- Ergonomic design for thigh and backrest support.
- Side Light arrangement on aisle seats.

Leisure